

SOLID-CORE CURRENT TRANSFORMER

J3CT105-XXX-100mA

J3CT series of solid-core current transformer offers 100mA at secondary from sensed primary current. Without using secondary CT inside of meter, users directly connect J3CT series to a meter for high accuracy metering application. It enables one meter to be adopted for various current rating by only changing primary CT so it makes compact design meter and reduces developing cost.

FEATURES

- 3 Phase measuring current transformers.
- Ranges: 125 to 250A
- Cable aperture : 3 @ 21 x 25mm
- RJ12 socket for use with our EASYMODULAR multi channel meters
- Panel / DIN Rail Mounting



OUTPUT VOLTAGE DATA

How to Order / Model Reference

eg **J3CT105-000/100mA**

J3CT105

Primary Current

Select code from ratio table

Secondary Voltage

Secondary Current **100mA**

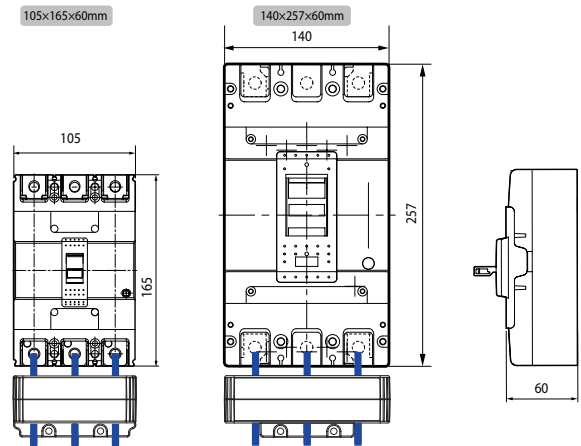
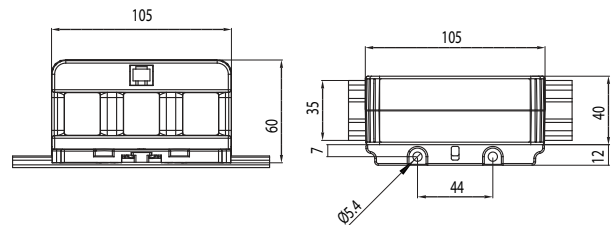
Current Transformer Ratios

Primary Current (A)	Metering Burden(VA)			Code
	cl. 0.2S	cl. 0.5S	cl. 1	
	cl. 0.3	cl. 0.6	cl. 1.2	
125	0.033			125
150	0.033			150
160	0.033			160
200	0.033			200
250	0.033			250

100mA Secondary

Accuracy conforms to IEC 61869-2, meets the measuring range from 1 to 120% of I_n

DIMENSIONS



⚠ CAUTION: DANGER ⚠

- HAZARD OF ELECTRIC SHOCK, EXPLOSION, OR ARC FLASH
- In order to guarantee safe operation of the transformer, please read and understand the instructions thoroughly. For your reference, see NFPA 70E in the USA, or applicable local codes.
 - This equipment must only be installed and put into operation by qualified electrical personnel or appropriately trained individual.
 - Before servicing the CTs, turn off all sources of power and use a properly rated voltage sensing device to check if the power is off.
 - Current transformer secondary must be shorted or connected to a burden all times.
 - Rearrange all covers and protective devices before powering the equipment.

🔔 NOTICE

- This product is not intentionally made for safety applications.
- Make sure not to install this transformer in hazardous or classified areas.
- The installer is responsible for conformance to all applicable codes.
- Ignoring the warnings can lead to serious injury and/or cause damages.
- If this product is used in a way not specified by the manufacturer, the protection offered by the product may be impaired. No responsibility is taken by J&D Electronics for any consequences arising by not following this material properly.